

## ***Eternal Return***

September 10 - November 19, 2017

**Curated by:** Sunshine Frère

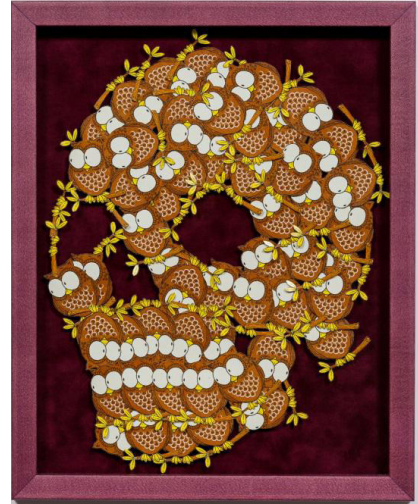
**Opening Reception:** September 9, 7 - 10 pm

**Panel Discussion**

with Barb Choit, Kevin Day, Anchi Lin with Sunshine Frère  
Sunday, September 10, 2 - 4 pm

**Notes to editors:**

Artists and Curator are available for interviews, an essay by Sunshine Frère will accompany the exhibition.



In partnership with the Richmond Museum, the Richmond Art Gallery presents *Eternal Return*, an ambitious exhibition guest curated by Sunshine Frère presenting new works by five Vancouver - based artists: Barb Choit, Kevin Day, Lucien Durey, Alanna Ho and Anchi Lin. Each artist has selected artifacts from the Museum's Migration Collection and developed works in direct dialogue with this eclectic array of historical objects. The products of this dialogue span a range of media including performance, video, photography, sound, and sculpture. Artworks and the artifacts that inspired them will be on display in the gallery, allowing visitors to uncover their polymorphous histories.

The title of the exhibition, *Eternal Return* is a concept that appears in philosophy, science-fiction, ancient history, and contemporary culture. It refers to the cyclical repetition of all things and situations throughout time. From the prestige an everyday item acquires when it becomes part of recorded history, to the surreal aura of a new or unknown artifact, this exhibition pays homage to the object and its power to invoke many returns.

Barb Choit's photomontage, *Richmond Reconstructions*, reflects on the still life. Collapsing centuries of art history and aesthetics into a single pictorial plane, Choit references the visual language of ancient Pompeii frescos to create a new still life featuring multiple museum artifacts. Artist Anchi Lin imbibes the performative qualities of her selected artifact in her work entitled *A Sealer*. Through a series of micro gestures, her actions conflate the original, practical purpose and nature of a tin can sealer with a complicated new narrative that explores issues of labour, gender and superfluity. Kevin Day investigates relationships between knowing and being, seeing and listening, detached and embodied in his piece entitled *study guide (speech to text mis-recognition and vice versa)*. Day's work incorporates his selected museum artifact - a school desk and chair - into an immersive audio-visual installation.

By nurturing innocent and deep play, artist Alanna Ho invites visitors into a red playroom where equal emphasis is placed on visual, aural and tactile exploration. Her work *After My Garden Grows*, has the makings of a child-like play-land, however further exploration in the space soon reveals that darker conceptual underpinnings are also on hand. Lucien Durey breaks down the identity of objects in order to illustrate their respective complex multiple histories. Shards of bottles, vases and many other glass

elements are reconstructed into colourful, mobiles. Referencing pop-music, art history and the everyday, these sculptures are also part of *Scarecrow, Visionary, Muse, Musa, Saguaro, Christiania*, a series of recurring vocal performances by the artist that will occur during the exhibition run.

*Eternal Return* at the Richmond Art Gallery will run concurrently with the Richmond Museum's exhibition entitled, *Our Journeys Here*, which is part of the museum's year-long conversation about what it means to be Canadian in Richmond. Both exhibitions feature artifacts from the museum's Migration Collection. Artist biographies, artwork images and special events connected to this exhibition can be found below. For more information please contact:

**Paula Hickey**  
**Gallery and Exhibitions Coordinator**  
phickey@richmond.ca, 604-247-8312

*The Richmond Art Gallery received a Canada Council project grant as well as a Richmond 150 grant in the support of this exhibition. The Richmond Art Gallery gratefully acknowledges the on-going support of the City of Richmond, Richmond Art Gallery Association, the BC Arts Council, and the Province of British Columbia.*

Image: *Apparition 4*, 2017, Lucien Durey, playing card collage on flocked mat board. Photo: Blaine Campbell.

---

**Richmond Art Gallery**  
180-7700 Minoru Gate  
Richmond, BC V6Y 1R9

**www.richmondartgallery.org**  
604-247-8300  
gallery@richmond.ca

Monday - Friday: 10 am - 6 pm  
Thursday: 10 am - 9 pm  
Saturday & Sunday: 10 am - 5pm

---



Canada Council  
for the Arts  
Conseil des Arts  
du Canada



BRITISH  
COLUMBIA  
ARTS COUNCIL  
an agency of the Province of British Columbia



We acknowledge the financial assistance of the Province of British Columbia

## BIOS

**Sunshine Frère** is a curator, writer and artist based in Vancouver, Canada. She holds an MA in Interactive Media from Goldsmiths, and a BFA in Studio Arts and Electroacoustic studies from Concordia University. Frère regularly works within local, national and international art communities. She currently sits as Strategic Initiatives Committee Co-Chair on Access Gallery's Board and also spends time working with the New Media Gallery in New Westminster. Recent and upcoming projects include *cache cache*, a solo exhibition of her work at Seymour Art Gallery, *Speculators of the Final Frontier*, an experimental text exploring art and space for SADmag and *Counteractive Subterfuge*, an exhibition text for the 2017 Emily Carr University of Art + Design Low Residency MFA cohort.

**Barb Choit** holds a BFA from Emily Carr University of Art + Design, an MFA from the California Institute of the Arts, and an MA in Modern Art and Curatorial Studies from Columbia University. Choit has exhibited widely at international venues such as the Queens Museum of Art, New York; Swiss Institute, New York; China Art Objects, Los Angeles; Cooper Cole Gallery, Toronto; Office Baroque, Brussels; and Arai Museum, Masterton, New Zealand. Her latest artist book, *Ten Shows*, was published by Or Gallery, Vancouver, in collaboration with Black Dog Publishing, London, UK. Recent solo exhibitions include *Pronk* at Rawson Projects, New York; and *Pronk Boutique* at Macaulay & Co Fine Art, Vancouver.

**Lucien Durey** lives and works in Vancouver, British Columbia. Durey holds a BFA from Emily Carr University of Art + Design and an MFA from Simon Fraser University's School for the Contemporary Arts. Employing a variety of media, Durey produces performance, sculpture, painting, photography and installation. Recent exhibitions include *HOT DOG CAR WASH*, Campbell River Art Gallery, 2017, *Swimming Pool Blue*, Achterhaus, Hamburg, 2016 and *Hamsterly Farm Water Tower*, Capture Photography Public Art Installation, 2016.

**Kevin Day** was born in Taipei, Taiwan. He received his MFA from the University of British Columbia and is currently based in Vancouver. Day's practice and research, focusing on concepts such as algorithmic culture, digital epistemology, and mediation, encompasses sound, video, text, graph, and media installations. He has presented his work and research nationally and internationally at locations such as the Vancouver Art Gallery, the Creative Media Centre in Hong Kong, Kunsthall in Aarhus, Free Word Centre in London, Qubit in New York, and Gallery 1313 in Toronto. Day has also authored several published articles on topics such as digital memories, sound, technology, and information.

**Anchi Lin** is of Taiwanese heritage, she currently lives and works in Vancouver. Lin has completed a BFA from Simon Fraser University. Lin explores, negotiates and interfaces with concepts such as language, identity, gender and cultural norms. Lin works with video, performance and sculpture. Her work navigates the interstitial spaces of flux between individual and collective consciousness. Recent exhibitions and performances include: *A Glass of Wine* - with Alanna Ho at Centre A, 2017, *Water, Digital Carnival Richmond World Festival*, 2016, and *Condensation: A Stage with Quiet Applause* in conjunction with Cinevolution as part of Your Kontinent Pop-up Media Festival in Richmond, 2016.

**Alanna Ho** is an emerging interdisciplinary artist based in Vancouver. Ho received a BFA in Music Composition and Theory at the University of Victoria. She further developed her practice at the Simon Fraser University School of the Arts. Ho combines deep play new media, and community engagement in her practice. She has performed at the Western Front, Gold Saucer Studios, The New Media Gallery, Tidal~Signal, The Anvil Theatre, VIVO Media Arts Centre, The Greater Art Gallery of Victoria, Centre A, and the SFU Audain Gallery. Ho is the founder of the *Rainbow Forecast Project*, a non-profit community and art initiative. RFP generates contemporary art discussions by allowing children to construct their own creative ideas in an interdisciplinary manner.

## ABOUT THE RICHMOND MUSEUM

The Richmond Museum Society supports the Richmond Museum, a community museum that collects, documents, researches, preserves, exhibits and interprets objects of historical and cultural significance to the development and history of Richmond. The museum makes the history of Richmond relevant, engaging and accessible.

---

## SPECIAL EVENTS

### Opening Reception

**September 9, 6 - 10 pm**

6 - 7 pm: Curator Preview for RAGA Members

7 pm: Opening remarks with performance by Lucien Durey

### Panel Discussion with Barb Choit, Kevin Day, Anchi Lin and Sunshine Frère

**September 10, 2 - 4 pm**

Join three of the artists from *Eternal Return*, as well as curator Sunshine Frère for an informal talk and tour. Learn more about the creative process behind the works and exhibition.

### *Scarecrow, Visionary, Muse, Musa, Saguaro, Christiania*

#### Various Times

Artist Lucien Durey will perform *Scarecrow, Visionary, Muse, Musa, Saguaro, Christiania* sporadically in the gallery throughout the duration of the exhibition. Durey's vocal compositions have been written for his sculptures featured in *Eternal Return*, and his performance will reveal additional narratives and meaning in his work. Gallery visitors are invited to attend a scheduled performance during Culture Days weekend, or perhaps chance upon one of Lucien's unscheduled additional iterations.

### Instrument Making and Active Listening Workshops by Alanna Ho

**Series of Three Workshop For Ages 4 - 6**

**Wednesdays & Fridays - September 13, 15, 20 and 22, 4:30 – 5:30 pm**

Appleseed Children's Playhouse, 5300 No 3 Rd, Richmond, BC

Using sound - making as a core focus, Alanna Ho engages an interactive open - concept play after - school workshops for children ages 4 - 6. A collaborative performance/installation at the end of classes will be presented at the Richmond Cultural Centre Performance Hall for families and youth of all ages during Culture Days. The nature of these workshops develops patience through active listening and invites creativity as students invent their own methods of music making. For details on how to register for this series of free workshops, visit [www.richmondartgallery.org](http://www.richmondartgallery.org).

### Family Sunday with Guest Artist Lucien Durey

**Sunday, September 24, 1:00 - 4:00 pm**

Guest artist Lucien Durey leads an interactive, hands - on art project for families and children of all ages, based on his works in the *Eternal Return* exhibition. Free admission, all materials provided.

## **ART AFTER DARK REMIX**

**October 19, 7 - 9 pm - Guest Artist Lucien Durey**

**November 16, 7 - 9 pm - Guest Artist Alanna Ho**

Join Lucien Durey or Alanna Ho as they host two different *Art After Dark Remix* sessions occurring in October and November. On October 19, Lucien Durey will lead an interactive arts activity based on his artworks and performances of *Scarecrow, Visionary, Muse, Musa, Saguaro, Christiania*. On November 16, Alanna Ho will present *Play Pattern No. 2: After My Garden Grows*, an interactive and collaborative performance using free movement, sound, video and music to invoke play and memory.

For more information visit the Richmond Art Gallery's *Art After Dark Remix* Series weblink:  
<http://www.richmondartgallery.org/learn-and-create/adults/art-after-dark-remix/>

## **CULTURE DAYS at Richmond Art Gallery, September 30 - October 1**

### **SEPTEMBER 30**

**Performances by Lucien Durey: *Scarecrow, Visionary, Muse, Musa, Saguaro, Christiania***

**Richmond Art Gallery, 12:00 pm & 3:00 pm**

As part of Culture Days at the Richmond Art Gallery, Lucien Durey will perform *Scarecrow, Visionary, Muse, Musa, Saguaro, Christiania*. Durey's vocal compositions have been written for a number of his sculptures featured in the *Eternal Return* exhibition. His performances will reveal additional narratives and meaning in this series and within each sculpture.

**Performance by *Rainbow Forecast Project* with Alanna Ho**

**Richmond Cultural Centre Performance Hall, 1:00 - 2:00 pm**

*Rainbow Forecast Project* presents a collaborative installation/performance for participants of all ages to play with sound and music making. This performance will be a culmination of the multi-disciplinary workshops Alanna Ho held at Appleseed Children's Playhouse on Instrument Making and Active Listening with students ages 4 - 6.

### **OCTOBER 1**

**Gallery Tours in Mandarin and English**

**12:00 pm, 1:00 pm & 2:00 pm**

Free tours of the *Eternal Return* exhibition will be provided at designated times for visitors in both English and Mandarin.